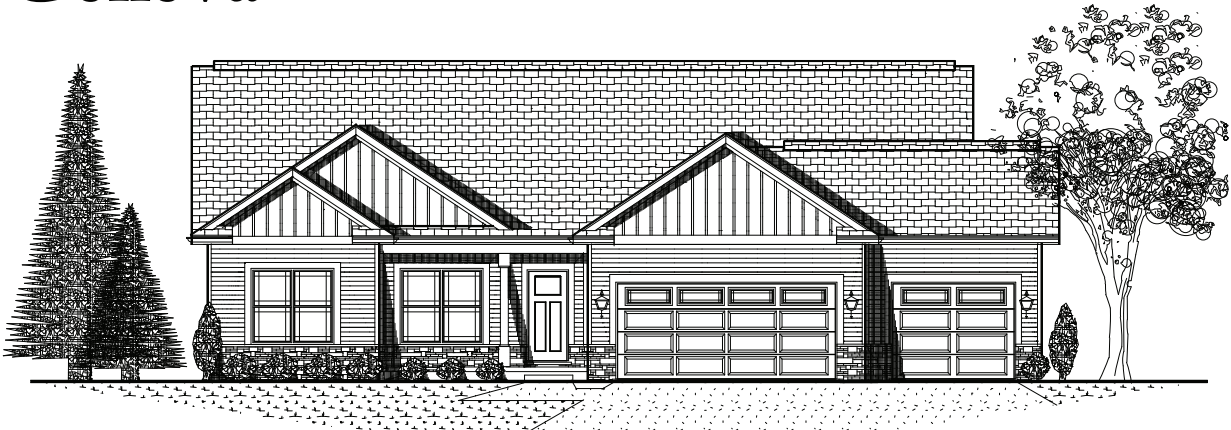


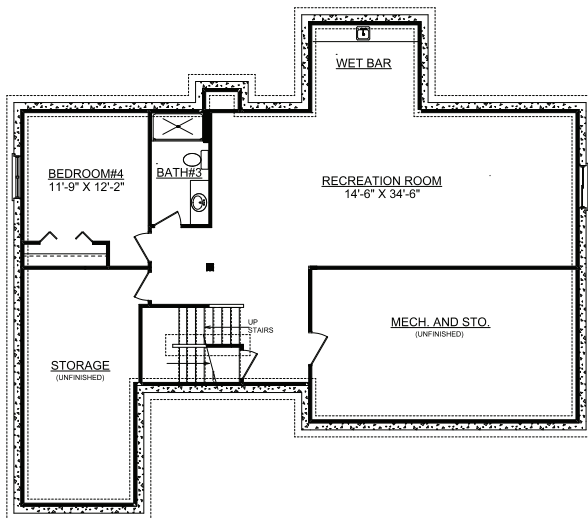
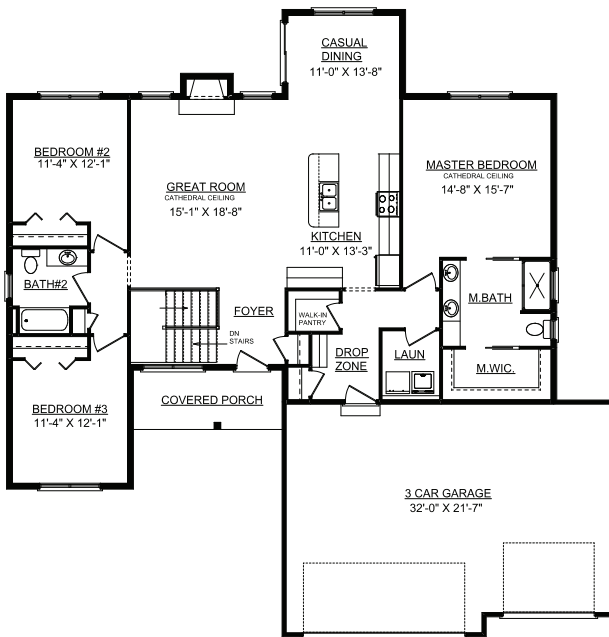
The Geneva



Home Information

2002 Max Run Drive, Champaign
Lot 422 Will's Trace IV

Price: SOLD
Available: SOLD



High Efficient Features...

2x6 Exterior Walls
95% Furnace, 13 SEER AC
Powervent Water heater
Direct Vent Fireplace
Low-E Pella Windows & Doors

Home Features...

New Geneva Ranch Floor Plan
4 Bedrooms, 3 Baths
3 Car Attached Garage
Finished Basement- Wet Bar, BR#4, Bath
Pella Windows and Exterior Doors
Spacious Foyer with U-Shaped Stairs
Drop Zone with Custom Lockers
Separate Laundry Room
Attractive Kitchen & Bath Cabinetry
-Featuring Soft Close Doors & Drawers
Large Center Island with Stool Seating
Granite Tops
Stainless Steel Appliances
Fireplace with Stone/Wood Surround
Wood & Ceramic Tile Flooring
Great Room Tray Ceiling
Master Bedroom Suite with Cathedral Ceiling
Master Bath Tiled Shower with Glass Door
Large Walk-In Closet
Professional Installed Radon Mitigation
Exterior Stone & Vinyl Board/Batten Accents

Plan Summary

First Floor	1859 sq.ft.
Finished Basement	1002 sq.ft.
TOTAL Finished	2861 sq.ft.



Contact Doug Johnson 217-355-8922
4120 Belmont Point. Champaign. IL. 61822
www.ironwoodhomes.ws